

MALOUF™



2023 CATALOG

MALOUF™

ADJUSTABLE BASES

pages 6-23

MATTRESSES

pages 24-49

FURNITURE

pages 50-63

PROTECTORS

pages 64-81

BEDDING

pages 82-97

PILLOWS

pages 98-141

BED FRAMES

pages 142-149

MATTRESS TOPPERS

pages 150-155

M

We believe in a

PEOPLE-FIRST

approach to business

It's our goal to give you the best quality, pricing, and service through innovative products, fast shipping, and comprehensive customer service.

But, we also know that you look for value in more than just what you're spending. You want your dollars to do good—and so do we.

A portion of all proceeds from our products supports the Malouf Foundation's fight against child sexual exploitation.

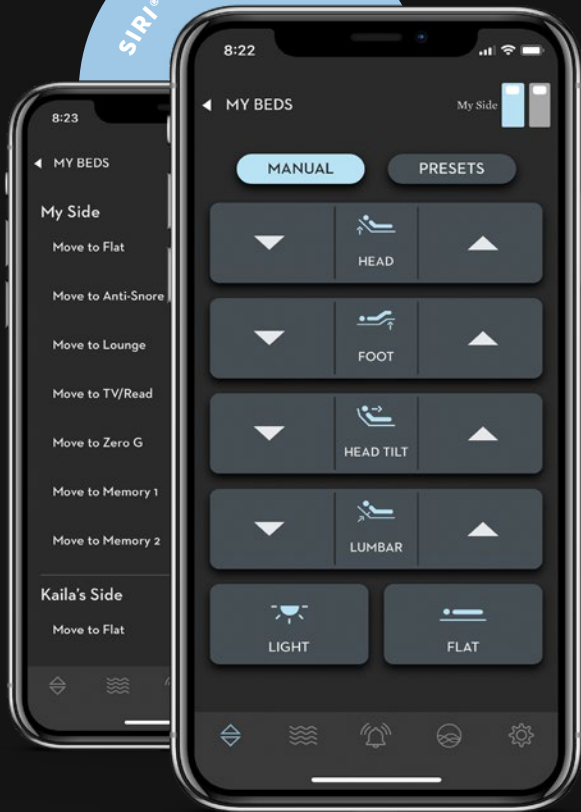
This is one way we're working to make a positive impact on the world and we're proud to be a part of the community of Certified B Corporations® that make a difference every day.



ADJUSTABLE
BASES



SIRI® COMPATIBLE



PREMIUM TECHNOLOGY MEETS SUPERIOR SERVICE

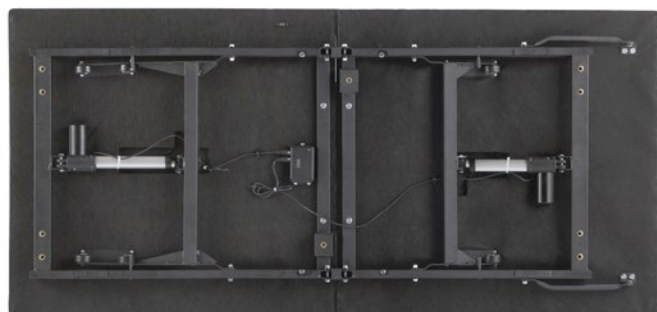
- Award-winning customer service specializing in our adjustable bases; accepts calls, texts, or emails for troubleshooting
- Established technician network across U.S. handles any issues
- Proven quality record with less than one percent service rate
- Malouf Base App™ is built and maintained in-house for peak performance and responsiveness

HIGHEST-RATED APP

Available for iOS and Android
Siri® Shortcut Voice Commands
Partner Control
Snore Detection
Dark Mode
Personalized Settings



E255 ADJUSTABLE BED BASE



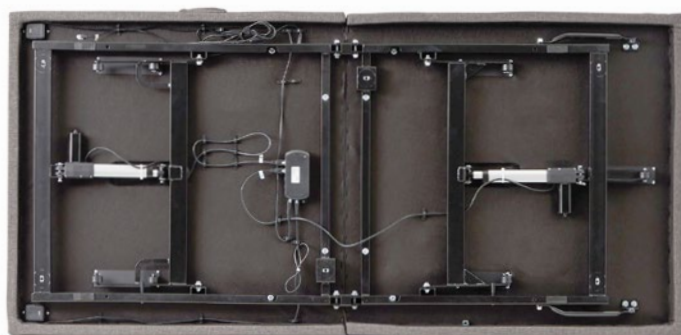
- Independent head incline: 0 - 60°
- Independent foot incline 0 - 45°
- 15-inch height from floor to top of base; includes 12-inch legs; modular legs available in additional sizes
- Wireless remote control
- Three preset positions: Zero Gravity, Anti-Snore, and Flat
- Two programmable positions can be customized and saved
- True zero clearance; remove the legs to place directly on foundations, platform bases, slat beds, or ground
- Upholstered with linen-inspired fabric
- 750-pound weight capacity on all sizes
- All sizes foldable for easy storage; Twin XL and Split California King can be shipped by FedEx and UPS
- Set up in 15 minutes from start to finish
- 10-year limited warranty guarantees high-quality construction

Adjustable Base

SIZE	SKU	PRICE
Twin XL	STE255TXAB	1,200.00
Split California King (half)	STE255SCAB	1,200.00
Full	STE255FFAB	1,400.00
Queen	STE255QQAB	1,400.00
King	STE255KKAB	2,000.00
California King	STE255CKAB	2,000.00



E455 SMART ADJUSTABLE BED BASE



- Independent head incline: 0 – 60°, foot incline: 0 – 45°
- 15-inch height from floor to top of base; includes 3", 3", 6" legs; modular legs available in additional sizes
- Backlit, wireless remote control, batteries included
- Three preset positions: Zero Gravity, Anti-Snore, and Flat
- Two programmable positions can be customized and saved
- True zero clearance; remove the legs to place directly on foundations, platform bases, slat beds, or ground (now includes slat stabilizer brackets)
- Dual 5V 1.5A charging ports located on both sides of base
- Bluetooth® with the highest-rated and industry-leading Malouf Base App™; Siri® Shortcut voice commands and automatic snore detection available
- Headboard brackets and other leg sizes available upon request
- Upholstered in linen-inspired fabric
- 850-pound weight capacity on all sizes
- All sizes foldable for easy storage; Twin, Twin XL, and Split California King can be shipped by FedEx and UPS
- Set up in 15 minutes from start to finish
- 20-year warranty guarantees high-quality construction

Adjustable Base

SIZE	SKU	PRICE
Twin	STE455TTAB	1,500.00
Twin XL	STE455TXAB	1,500.00
Split California King (Half)	STE455SCAB	1,500.00
Full	STE455FFAB	1,700.00
Queen	STE455QQAB	1,700.00
King	STE455KKAB	2,400.00



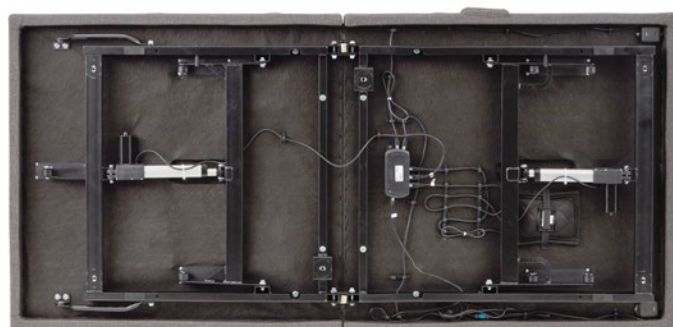
BLUETOOTH®



APP

New Charcoal upholstery may not be immediately available on all sizes.

M455 SMART ADJUSTABLE BED BASE



- Independent head incline: 0 – 60°, foot incline: 0 – 45°
- 15-inch height from floor to top of base; includes 3", 3", 6" legs; modular legs available in additional sizes
- Backlit, wireless remote control, batteries included
- Two preset positions: Zero Gravity and Flat
- One programmable position can be customized and saved
- True zero clearance; remove the legs to place directly on foundations, platform bases, slat beds, or ground (now includes slat stabilizer brackets)
- Dual 5V 1.5A charging ports located on both sides of base
- Zoned neck and back massage with three intensities
- Bluetooth® with the highest-rated and industry-leading Malouf Base App™; Siri® Shortcut voice commands and automatic snore detection available
- Headboard brackets and other leg sizes available upon request
- Upholstered in linen-inspired fabric
- 850-pound weight capacity on all sizes
- All sizes foldable for easy storage; Twin XL and Split California King can be shipped by FedEx and UPS
- Set up in 15 minutes from start to finish
- 20-year warranty guarantees high-quality construction

Adjustable Base

SIZE	SKU	PRICE
Twin XL	STM455TXAB	1,700.00
Split Queen (Half)	STM455SQAB	1,700.00
Split California King (Half)	STM455SCAB	1,700.00
Full	STM455FFAB	1,900.00
Queen	STM455QQAB	1,900.00
King	STM455KKAB	2,600.00



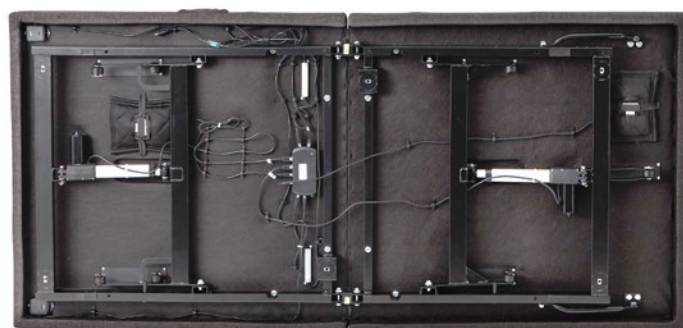
BLUETOOTH®



APP

New Charcoal upholstery may not be immediately available on all sizes.

M555 SMART ADJUSTABLE BED BASE



- Independent head incline: 0 – 60°, foot incline: 0 – 45°
- 15-inch height from floor to top of base; includes 3", 3", 6" legs; modular legs available in additional sizes
- LED backlit wireless remote control, batteries included
- Five preset positions: Zero Gravity, Anti-Snore, Lounge, TV, and Flat
- Five programmable positions can be customized and saved
- True zero clearance; remove the legs to place directly on foundations, platform bases, slat beds, or ground (now includes slat stabilizer brackets)
- Dual 5V 1.5A charging ports located on both sides of base
- Bluetooth® with the highest-rated and industry-leading Malouf Base App™; Siri® Shortcut voice commands and automatic snore detection available
- 12 dual-zone massage options: 4 types, 3 intensities with 3 time settings
- Underbed LED nightlights
- Child-lock safety feature
- Headboard brackets and other leg sizes available upon request
- Upholstered in linen-inspired fabric
- 850-pound weight capacity on all sizes
- All sizes foldable for easy storage; Twin, Twin XL, Split Queen, and Split California King can be shipped by FedEx and UPS
- Set up in 15 minutes from start to finish
- 20-year warranty guarantees high-quality construction

Adjustable Base

SIZE	SKU	PRICE
Twin XL	STM555TXAB	1,900.00
Split Queen (Half)	STM555SQAB	1,900.00
Split California King (Half)	STM555SCAB	1,900.00
Full	STM555FFAB	2,100.00
Queen	STM555QQAB	2,100.00
King	STM555KKAB	2,800.00
California King	STM555CKAB	2,800.00



BLUETOOTH®



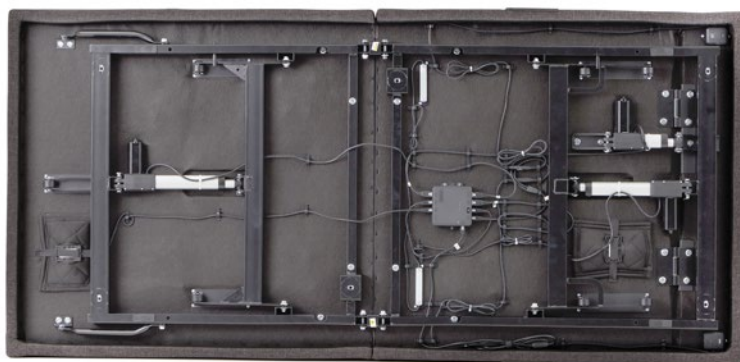
APP

New Charcoal upholstery may not be immediately available on all sizes.

S655 SMART ADJUSTABLE BED BASE



- Independent head incline: 0 – 60°, foot incline: 0 – 45°
- Bluetooth® with the highest-rated and industry-leading Malouf Base App™; Siri® Shortcut voice commands and automatic snore detection available
- Underbed LED nightlights
- 15-inch height from floor to top of base; includes 3", 3", 6" legs; modular legs available in additional sizes
- Child-lock safety feature
- Head tilt helps improve breathing and eliminate snoring
- Headboard brackets and other leg sizes available upon request
- Motion-activated LED backlit wireless remote control, batteries included
- Upholstered in linen-inspired fabric
- Seven preset positions including Zero Gravity, Anti-Snore, and Lounge
- 850-pound weight capacity on all sizes
- Six programmable positions can be customized and saved
- All sizes foldable for easy storage; Twin XL and Split California King can be shipped by FedEx and UPS
- True zero clearance; remove the legs to place directly on foundations, platform bases, slat beds, or ground (now includes slat stabilizer brackets)
- Set up in 15 minutes from start to finish
- Dual 5V 1.5A charging ports located on both sides of base
- 20-year warranty guarantees high-quality construction
- Nine dual-zone massage options: 3 programs, 3 intensities, 3 timers



Adjustable Base

SIZE	SKU	PRICE
Twin XL	STS655TXAB	2,100.00
Split California King (Half)	STS655SCAB	2,100.00
Full	STS655FFAB	2,500.00
Queen	STS655QQAB	2,500.00
King	STS655KKAB	3,000.00



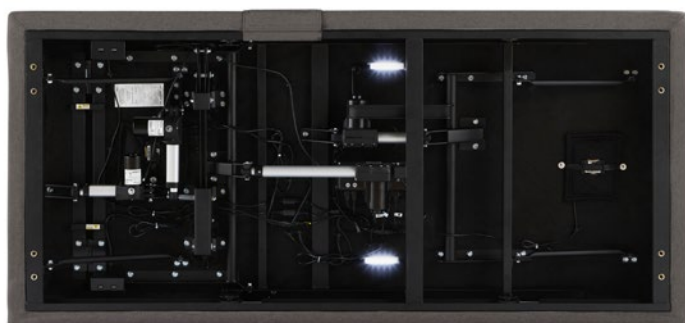
BLUETOOTH™



APP

New Charcoal upholstery may not be immediately available on all sizes.

S755 SMART ADJUSTABLE BED BASE



BLUETOOTH



APP

- Independent head incline: 0 – 60°, foot incline: 0 – 45°
- 15-inch floor to top of base height; includes 3" and 5" legs; modular legs available in additional sizes
- Motion-activated LED backlit wireless remote control, batteries included
- Five preset positions: Zero Gravity, Anti-Snore, Lounge, TV, and Flat
- Six programmable positions can be customized and saved
- True zero clearance; remove the legs to place directly on foundations, platform bases, slat beds, or ground
- One 5V 1A charging port and one 5V 2A charging port on the base
- Bluetooth® with the highest-rated and industry-leading Malouf Base App™; Siri® Shortcut voice commands and automatic snore detection available
- 12 dual-zone massage options: 4 types, 3 intensities with 3 time settings
- Underbed LED nightlights
- Child-lock safety feature
- Head tilt helps improve breathing and eliminate snoring
- Adjustable lumbar support allows you to find your perfect feel
- Reach Assist™ technology moves the bed back as it rises, allowing easy access to nightstand
- Headboard brackets available upon request
- Upholstered in linen-inspired fabric
- 850-pound weight capacity on all sizes
- Set up in 15 minutes from start to finish
- 20-year warranty guarantees high-quality construction

Adjustable Base

SIZE	SKU	PRICE
Twin XL	STS755TXAB	2,800.00
Split California King (Half)	STS755SCAB	2,800.00
Queen	STS755QQAB	3,200.00

New Charcoal upholstery may not be immediately available on all sizes.



E255



E455



M455



M555



S655



S755

Remote	Wireless	Wireless	Wireless	Wireless	Wireless	Wireless
Warranty	10 Year	20 Year	20 Year	20 Year	20 Year	20 Year
Weight Capacity	750 lbs	850 lbs	850 lbs	850 lbs	850 lbs	850 lbs
Floor-to-Deck Height	15"	15"	15"	15"	15"	15"
Included Leg Height	12"	3" + 3" + 6"	3" + 3" + 6"	3" + 3" + 6"	3" + 3" + 6"	3" + 5"
Head Incline	●	●	●	●	●	●
Foot Incline	●	●	●	●	●	●
Quiet Motors	●	●	●	●	●	●
Ships via UPS	Twin XL, Split Cal King	Twin, Twin XL, Split Cal King	Twin XL, Split Queen, Split Cal King	Twin, Twin XL, Split Cal King, Split Queen	Twin XL, Split Cal King	
Memory Position(s)	2	2	1	5	6	6
Preset Position(s)	3	3	2	5	7	5
Zero Clearance	●	●	●	●	●	●
USB Ports		●	●	●	●	●
Malouf Base App™		●	●	●	●	●
Sync Cable Included		●	●	●	●	●
Massage			Single-Zone	Dual-Zone	Dual-Zone	Dual-Zone
LED Underbed Lights				●	●	●
Child Safety Lock				●	●	●
Head Tilt					●	●
Lumbar Support						●
Reach Assist™						●
Queen Price	\$1,400	\$1,700	\$1,900	\$2,100	\$2,500	\$3,200

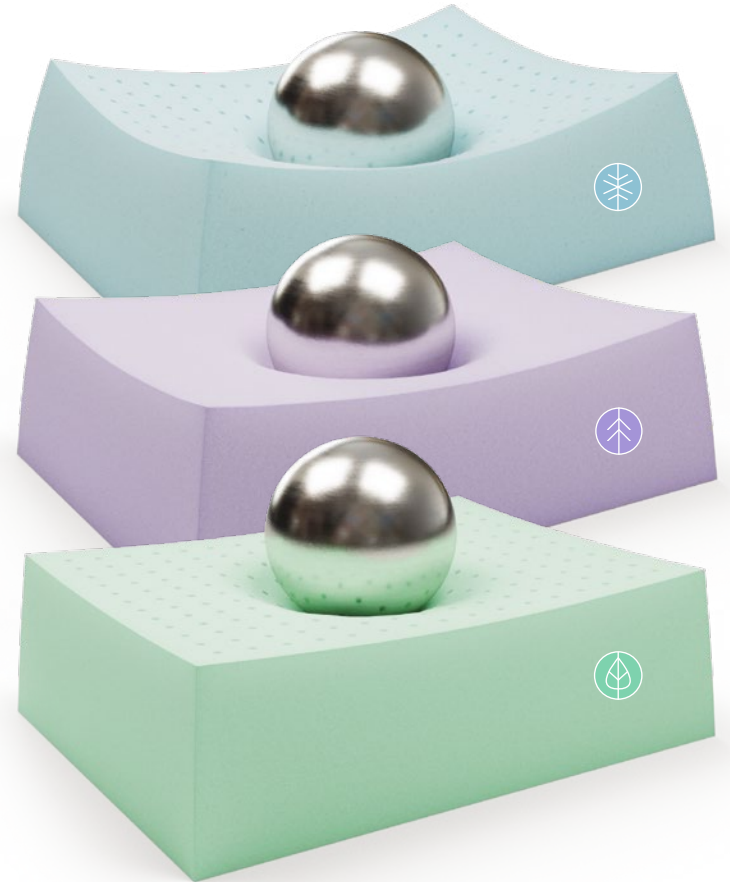
MATTRESSES



MALOUF



CHOOSE YOUR FEEL



- COOLSYNC™ FOAM**  *Extremely cool and contouring*
- ACTIVAIR™ FOAM**  *The perfect blend of responsive and contouring support*
- AEROFLEX™ LATEX**  *Supportive, quick-response feel*



ALL MATTRESSES:



EMBARK



CoolSync™ Mattresses



Start Your Sleep Journey

A premium all-foam mattress made to support, contour, and cradle every curve. Multiple layers of soft foam offer incredible pressure relief, while a gel infusion balances sleep temperature for purely restful sleep.

FEATURING



CoolSync™ Foam



Foam is CertiPUR-US® certified to meet the highest standards



Compressed, rolled, and boxed for easy transportation

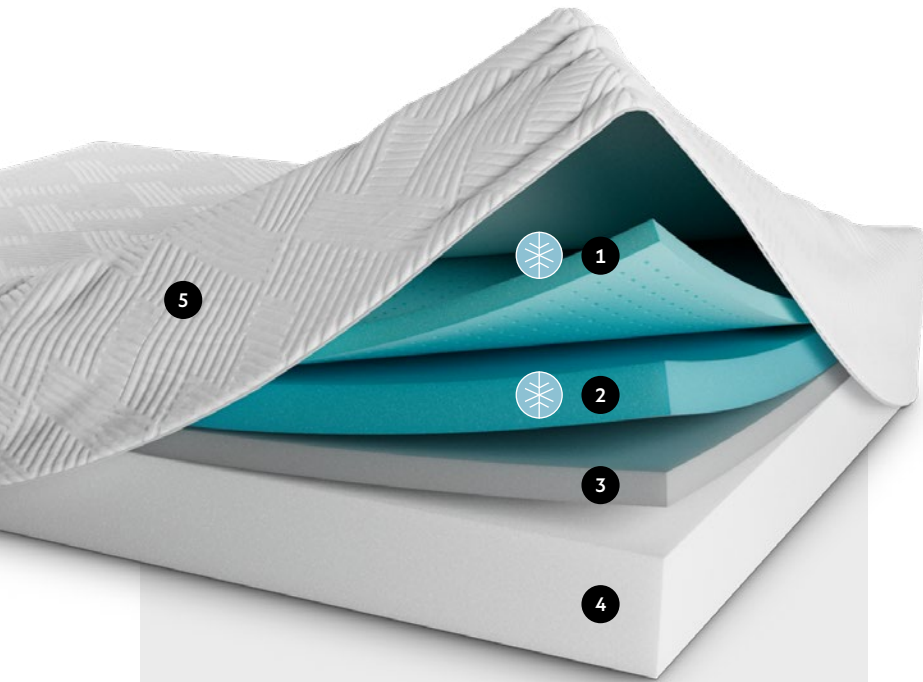


10-year non-prorated warranty



COOLSYNC™ MATTRESSES

- Ultra-plush CoolSync™ foam gently contours the body and balances sleep temperature with a gel infusion
- Ventilated design in top layer of CoolSync™ foam optimizes air flow and boosts temperature regulation
- Supportive base foam provides a solid foundation that remains flexible for use with an adjustable bed base
- 14-inch profiles include a plush base foam layer to increase comfort and help evenly distribute weight
- Quilted jacquard cover keeps everything in place and offers a plush, breathable sleep surface
- Foam is CertiPUR-US® certified to meet the highest standards
- 10-year warranty

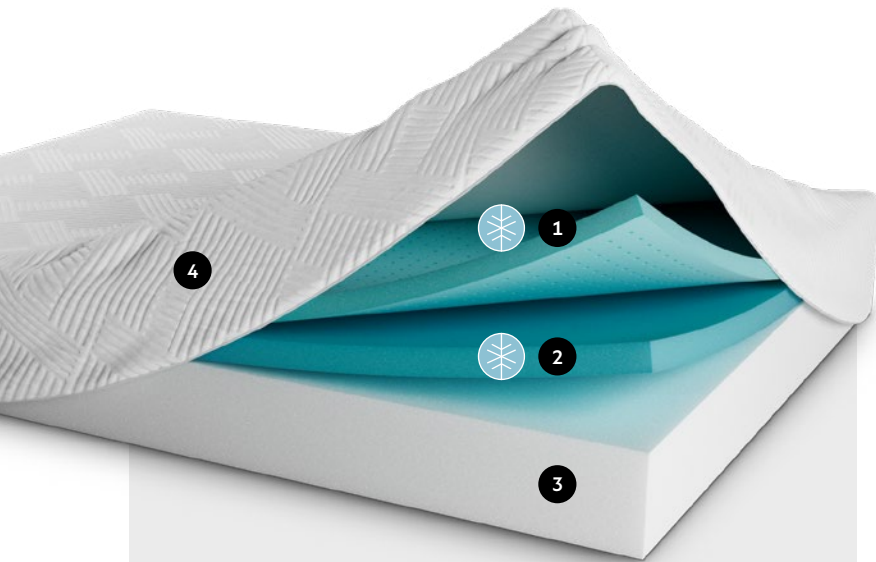


What's Inside

- 1 **1.5"** Ventilated Ultra-Plush CoolSync™ Foam
- 2 **3"** Ultra-Plush CoolSync™ Foam
- 3 **2"** Plush Base Foam
- 4 **7.5"** Supportive Base Foam
- 5 **Soft Jacquard Cover**

14" CoolSync™ Mattress

SIZE	SKU	PRICE
Twin	MM14TT45GB	1,800.00
Twin XL	MM14TX45GB	2,000.00
Full	MM14FF45GB	2,400.00
Queen	MM14QQ45GB	2,700.00
Split Head Queen	MM14YQ45GB	3,300.00
King	MM14KK45GB	3,300.00
Split Head King	MM14YK45GB	3,800.00
California King	MM14CK45GB	3,300.00
Split Head California King	MM14YC45GB	2,000.00



What's Inside

- 1** 1.5" Ventilated Ultra-Plush CoolSync™ Foam
- 2** 2" Ultra-Plush CoolSync™ Foam
- 3** 7.5" Supportive Base Foam
- 4** Soft Jacquard Cover



11" CoolSync™ Mattress

SIZE	SKU	PRICE
Twin	MM11TT35GB	1,500.00
Twin XL	MM11TX35GB	1,600.00
Full	MM11FF35GB	2,100.00
Queen	MM11QQ35GB	2,200.00
Split Head Queen	MM11YQ35GB	2,500.00
Split Queen (half)	MM11SQ35GB	1,500.00
King	MM11KK35GB	2,600.00
Split Head King	MM11YK35GB	3,000.00
California King	MM11CK35GB	2,600.00
Split California King (half)	MM11SC35GB	1,600.00
Split Head California King	MM11YC35GB	2,900.00

ASCEND



Hybrid Mattresses



Elevate Your Sleep Journey

A hybrid mattress designed to offer upgraded support. Layers of individually-encased steel coils and your choice of soft CoolSync™ foam or responsive AeroFlex™ latex provide perfectly balanced sleep for years to come.

FEATURING



CoolSync™ Foam



AeroFlex™ Latex



Foam is CertiPUR-US® certified to meet the highest standards



Compressed, rolled, and boxed for easy transportation



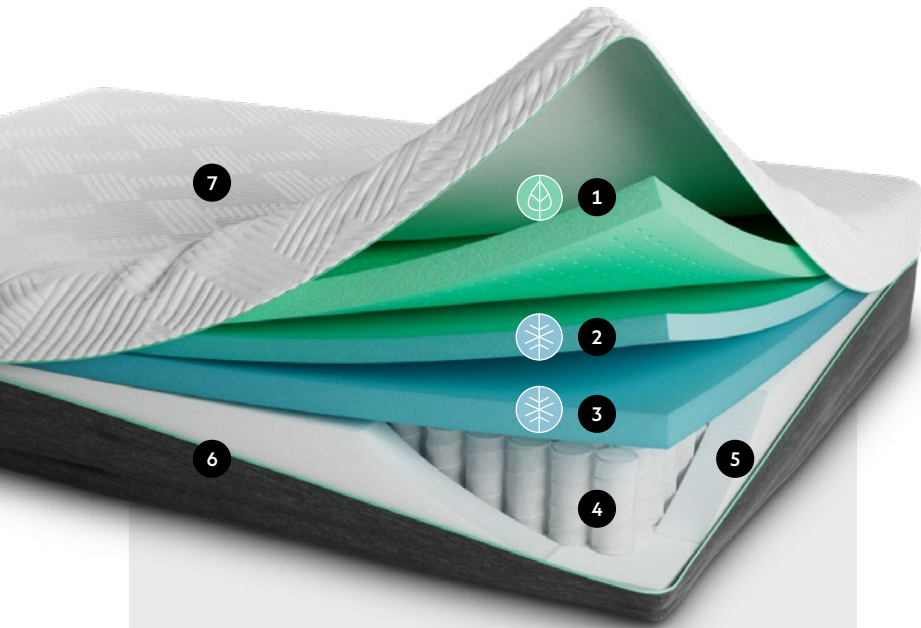
10-year non-prorated warranty



ASCEND

AEROFLEX™ HYBRID MATTRESSES

- Ventilated AeroFlex™ layer is made of premium latex, with a super breathable and quick-response feel that offers firm support while lightly contouring the body
- Ultra-plush CoolSync™ foam has a gel infusion, offering additional contouring and pressure relief, while simultaneously balancing sleep temperature
- Individually-encased steel coils absorb and isolate motion, creating an extremely strong core of support
- Supportive base foam provides a stable foundation while still remaining flexible for use with an adjustable bed base
- Chambray sidewall fabric adds softness and a luxurious look and feel from all sides
- Quilted jacquard cover keeps everything in place and offers a plush, breathable sleep surface
- Foam is CertiPUR-US® certified to meet the highest standards
- 10-year warranty

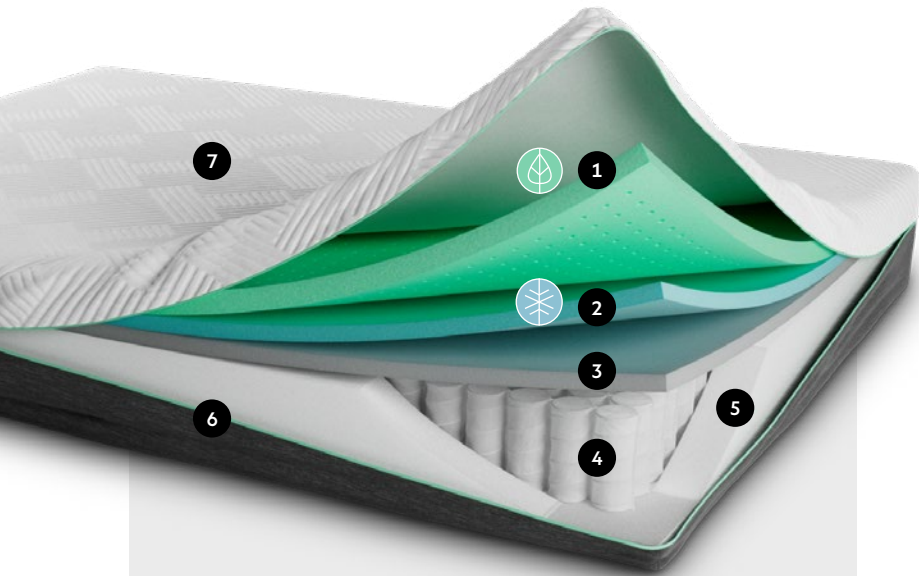


What's Inside

- 1 2" Ventilated AeroFlex™ Layer
- 2 1.5" Ultra-Plush CoolSync™ Foam
- 3 2" Medium-Plush CoolSync™ Foam
- 4 6" Individually-Encased Coils
- 5 2.5" High-Density Base Foam
- 6 Chambray Sidewall Fabric
- 7 Soft Jacquard Cover

14" AeroFlex™ Hybrid Mattress

SIZE	SKU	PRICE
Twin	MM14TT70LH	2,100.00
Twin XL	MM14TX70LH	2,200.00
Full	MM14FF70LH	2,600.00
Queen	MM14QQ70LH	3,000.00
Split Queen (half)	MM14SQ70LH	1,800.00
King	MM14KK70LH	3,600.00
California King	MM14CK70LH	3,600.00
Split California King (half)	MM14SC70LH	2,200.00



What's Inside

- 1** 1.5" Ventilated AeroFlex™ Layer
- 2** 1" Ultra-Plush CoolSync™ Foam
- 3** 1" Supportive Transition Foam
- 4** 6" Individually-Encased Coils
- 5** 1.5" High-Density Base Foam
- 6** Chambray Sidewall Fabric
- 7** Soft Jacquard Cover

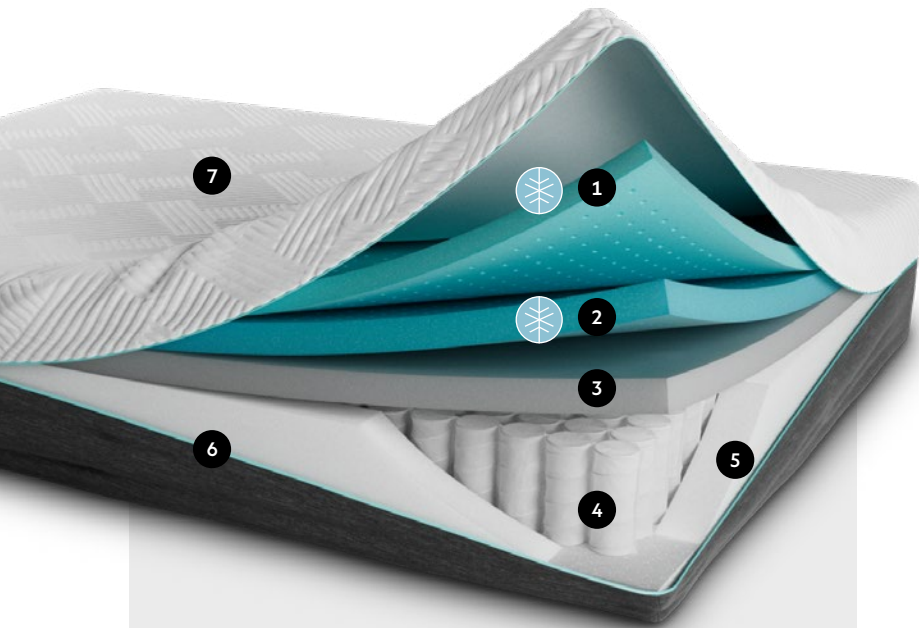


11" AeroFlex™ Hybrid Mattress

SIZE	SKU	PRICE
Twin	MM11TT70LH	1,700.00
Twin XL	MM11TX70LH	1,800.00
Full	MM11FF70LH	2,200.00
Queen	MM11QQ70LH	2,400.00
Split Queen (half)	MM11SQ70LH	1,400.00
King	MM11KK70LH	3,000.00
California King	MM11CK70LH	3,000.00
Split California King (half)	MM11SC70LH	1,800.00



COOLSYNC™ HYBRID MATTRESSES



What's Inside

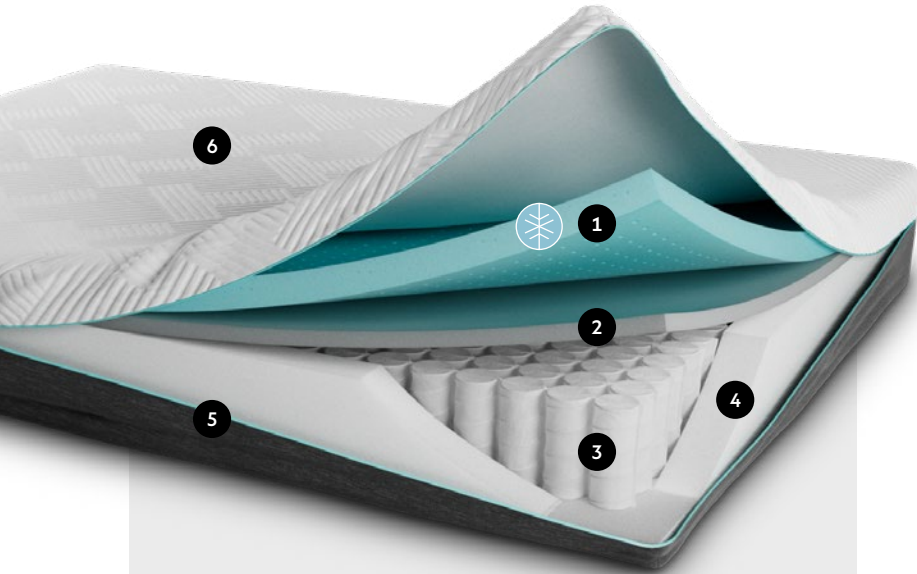
- 1 **1.5"** Ventilated Ultra-Plush CoolSync™ Foam
- 2 **2"** Ventilated Medium-Plush CoolSync™ Foam
- 3 **2"** Supportive Transition Foam
- 4 **6.5"** Individually-Encased Coils
- 5 **2"** High-Density Base Foam
- 6 Chambray Sidewall Fabric
- 7 Soft Jacquard Cover

- Ultra-plush CoolSync™ foam has a gel infusion and ventilated design, providing a soft cushion that contours the body and balances sleep temperature
- 14-inch profiles feature a medium-plush layer of CoolSync™ foam for extra cooling power and pressure relief
- Individually-encased steel coils absorb and isolate motion, creating an extremely strong core of support
- Supportive base foam provides a stable foundation while still remaining flexible for use with an adjustable bed base
- Chambray sidewall fabric adds softness and a luxurious look and feel from all sides
- Quilted jacquard cover keeps everything in place and offers a plush, breathable sleep surface
- Foam is CertiPUR-US® certified to meet the highest standards
- 10-year warranty

14" CoolSync™ Hybrid Mattress

SIZE	SKU	PRICE
Twin	MM14TT38GH	1,800.00
Twin XL	MM14TX38GH	2,100.00
Full	MM14FF38GH	2,400.00
Queen	MM14QQ38GH	2,700.00
Split Queen (half)	MM14SQ38GH	1,600.00
King	MM14KK38GH	3,400.00
California King	MM14CK38GH	3,400.00
Split California King (half)	MM14SC38GH	2,000.00

 ASCEND



What's Inside

- 1** 2" Ventilated Ultra-Plush CoolSync™ Foam
- 2** 1" Supportive Transition Foam
- 3** 6.5" Individually-Encased Coils
- 4** 1.5" High-Density Base Foam
- 5** Chambray Sidewall Fabric
- 6** Soft Jacquard Cover



11" CoolSync™ Hybrid Mattress

SIZE	SKU	PRICE
Twin	MM11TT38GH	1,600.00
Twin XL	MM11TX38GH	1,700.00
Full	MM11FF38GH	2,100.00
Queen	MM11QQ38GH	2,300.00
Split Queen (half)	MM11SQ38GH	1,300.00
King	MM11KK38GH	2,700.00
California King	MM11CK38GH	2,700.00
Split California King (half)	MM11SC38GH	1,700.00

PEAK



All-New Premium Hybrid Mattresses



Fulfill Your Sleep Journey

Our premium hybrid mattress features the latest sleep technology—pairing luxury with innovation for incredibly intuitive support.

FEATURING



ActivAir™
Foam



CoolSync™
Foam



AltiCoil™
Comfort Layer



Hyperchill™
Cover



Foam is CertiPUR-US®
certified to meet the
highest standards



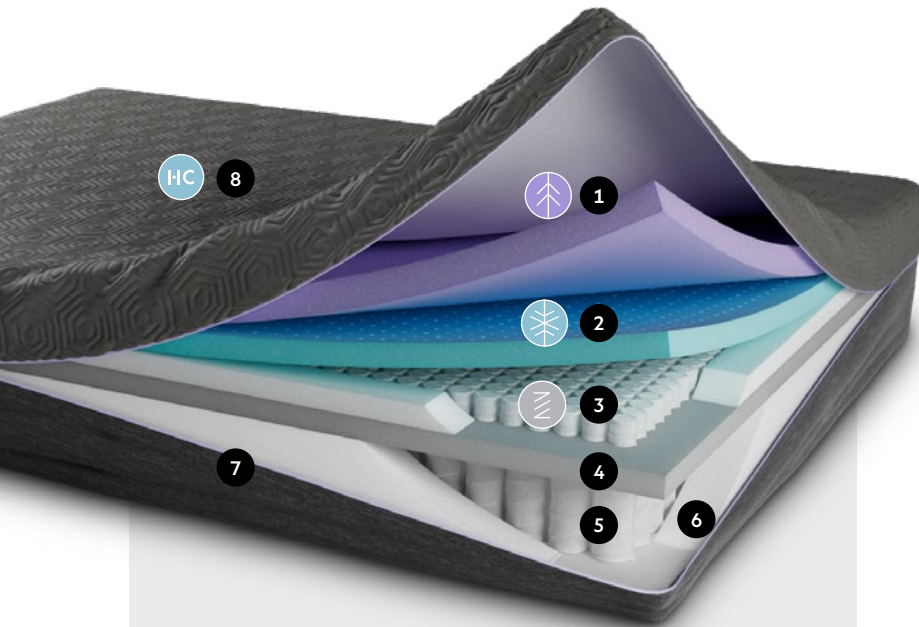
Compressed, rolled,
and boxed for easy
transportation



10-year non-
prorated warranty



ACTIVAIR™ HYBRID MATTRESSES



What's Inside

- 1 2" Ultra-Breathable ActivAir™ Foam
- 2 1.5" Ventilated Medium-Plush CoolSync™ Foam
- 3 1.5" Responsive Alticoil™ Comfort Layer
- 4 1.5" Supportive Transition Foam
- 5 6" Individually-Encased Coils
- 6 1.5" Supportive Base Foam
- 7 Chambray Sidewall Fabric
- 8 Cooling HyperChill™ Cover

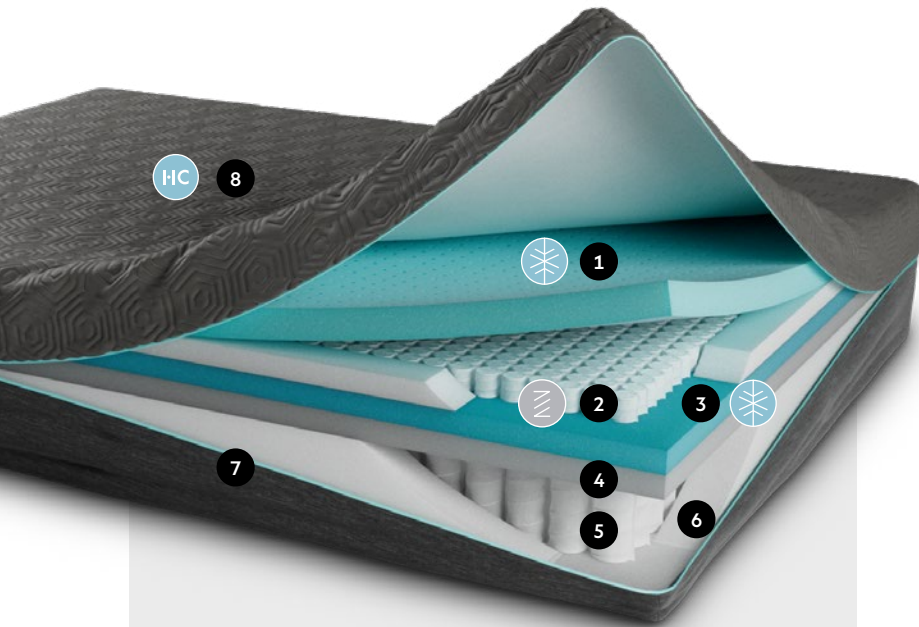
- ActivAir™ foam is extremely breathable, with an open-cell structure designed to increase airflow and respond more rapidly than traditional memory foam
- Ultra-plush CoolSync™ foam has a gel infusion, providing a soft cushion that contours the body and balances sleep temperature
- AltiCoil™ comfort layer is super responsive, with hundreds of miniature individually-encased steel coils made to compress and expand for targeted pressure relief
- An additional layer of individually-encased steel coils absorbs and isolates motion, creating an extremely strong core of support
- Supportive base foam provides a stable foundation while still remaining flexible for use with an adjustable bed base
- Cooling HyperChill™ cover is cool to the touch, offsetting excess body heat
- Foam is CertiPUR-US® certified to meet the highest standards
- 10-year warranty

14" ActivAir™ Hybrid Mattress + HyperChill™ Cover

SIZE	SKU	PRICE
Twin XL	MM14TX50PERH	2,900.00
Full	MM14FF50PERH	3,400.00
Queen	MM14QQ50PERH	3,700.00
King	MM14KK50PERH	4,400.00
California King	MM14CK50PERH	4,400.00



COOLSYNC™ HYBRID MATTRESSES



What's Inside

- 1 2" Ventilated Ultra-Plush CoolSync™ Foam
- 2 1.5" Responsive AltiCoil™ Comfort Layer
- 3 1.5" Medium-Plush CoolSync™ Foam
- 4 1.5" Supportive Transition Foam
- 5 6" Individually-Encased Coils
- 6 1.5" Supportive Base Foam
- 7 Chambray Sidewall Fabric
- 8 Cooling HyperChill™ Cover

- Ultra-plush CoolSync™ foam has a gel infusion, providing a soft cushion that contours the body and balances sleep temperature
- AltiCoil™ comfort layer is super responsive, with hundreds of miniature individually-encased steel coils made to compress and expand for targeted pressure relief
- Another layer of CoolSync™ foam adds extra cooling power and pressure relief
- An additional layer of individually-encased steel coils absorbs and isolates motion, creating an extremely strong core of support
- Supportive base foam provides a stable foundation while still remaining flexible for use with an adjustable bed base
- Cooling HyperChill™ cover is cool to the touch, offsetting excess body heat
- Foam is CertiPUR-US® certified to meet the highest standards
- 10-year warranty

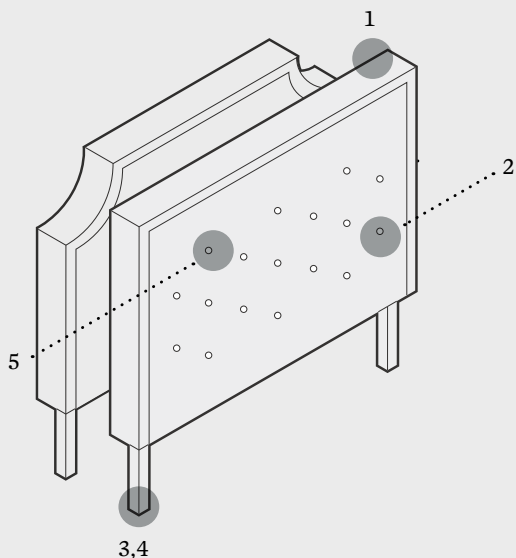
14" CoolSync™ Hybrid Mattress + HyperChill™ Cover

SIZE	SKU	PRICE
Twin XL	MM14TX38PERH	2,900.00
Full	MM14FF38PERH	3,400.00
Queen	MM14QQ38PERH	3,700.00
King	MM14KK38PERH	4,400.00
California King	MM14CK38PERH	4,400.00

FURNITURE



Upholstered HEADBOARDS



KEY FEATURES

- 1** Finished Back
includes a discrete compartment for storage
- 2** Ultra-Plush Padding
added comfort
- 3** Adjustable Legs
2-inch increments
- 4** Easy Installation
pre-drilled legs, modification plates, and wall mounts
- 5** Buttonless Tufting
geometric shape for clean, modern look

COLORS AND SKU CODES

● OA = Oat ● CH = Charcoal ● ST = Stone



- Select between rounded or square corners
- Legs adjust headboard height from 46 to 58 inches; mount directly to wall for any desired height
- Upholstered in 3 fabric options
- Pairs interchangeably with Malouf™ upholstered bases
- 15-year warranty guarantees high-quality construction

Hennessy (Square)

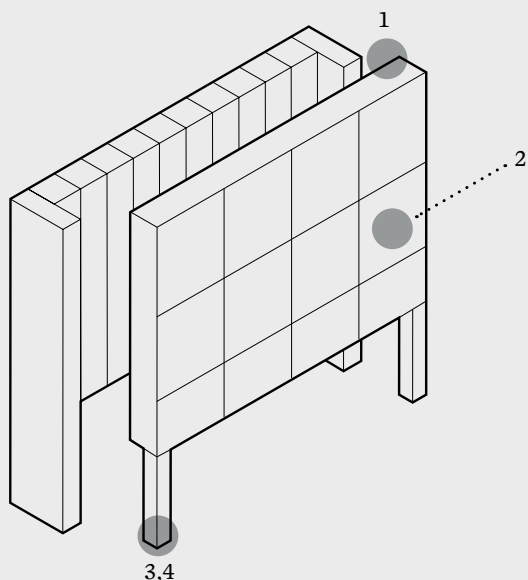
SIZE	SKU	PRICE
Queen	STQQ_HENHNB	1,300.00
King/California King	STKK_HENHNB	1,300.00

Carlisle (Rounded)

SIZE	SKU	PRICE
Queen	STQQ_CARLHB	1,400.00
King/California King	STKK_CARLHB	1,400.00

Designer

HEADBOARDS



KEY FEATURES

- 1** **Finished Back**
includes a discrete compartment for storage
- 2** **Unique Plush Padding**
deep square tufting on the Scoresby and vertical channels on the Blackwell
- 3** **Statement Piece**
headboards are three feet tall with added leg height
- 4** **Easy Installation**
pre-drilled legs, modification plates, and wall mounts

COLORS AND SKU CODES

● OA = Oat ● CH = Charcoal ● ST = Stone



- Select either designer option for an instant style upgrade
- Blackwell stands at 56.75 inches tall and is not adjustable, includes wings
- Scoresby adjusts from 49.5 to 61.5 inches; mount directly to wall for any desired height
- Upholstered in 3 fabric options
- Pairs interchangeably with Malouf™ upholstered bases
- 15-year warranty guarantees high-quality construction

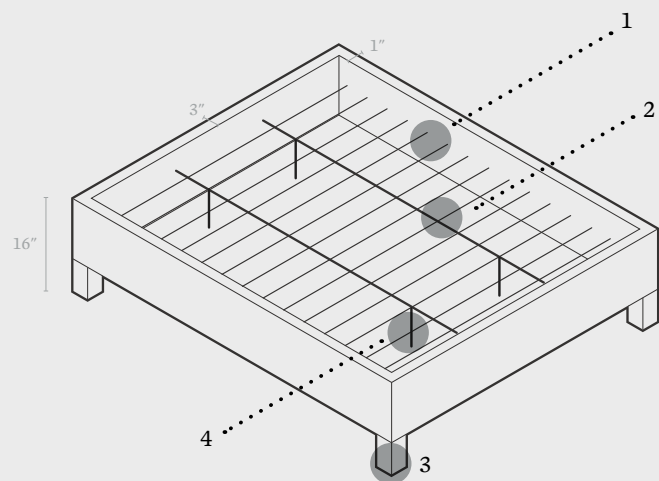
Scoresby

SIZE	SKU	PRICE
Queen	STQQ_SCORHB	600.00
King/California King	STKK_SCORHB	700.00

Blackwell

SIZE	SKU	PRICE
Queen	STQQ_BLWBHB	600.00
King/California King	STKK_BLWBHB	700.00

EASTMAN UPHOLSTERED BASE



KEY FEATURES

- | | |
|--|--|
| <p>1 Slat Roll
<i>2.9-inch slat gap ensures compatibility with all industry mattress warranties</i></p> | <p>2 Center Bar(s)
<i>create maximum support and comfort</i></p> |
| <p>3 Corner Legs
<i>sleek wood finish</i></p> | <p>4 Additional Legs
<i>provided with center bar for additional stability</i></p> |

COLORS AND SKU CODES

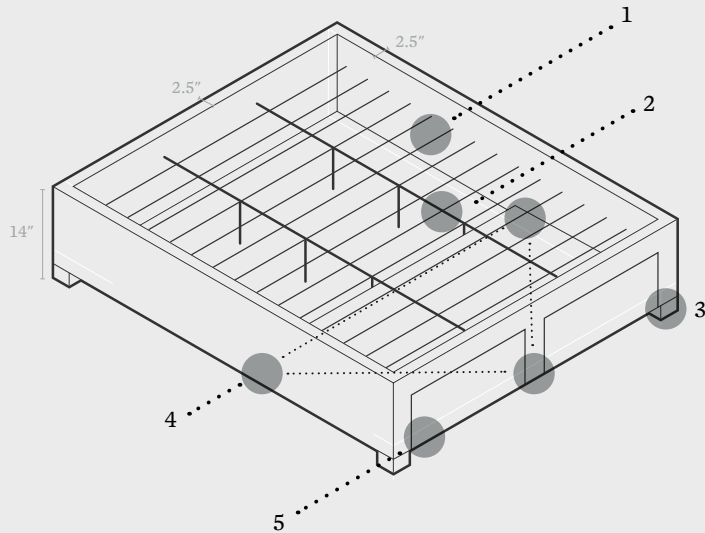
● OA = Oat ● CH = Charcoal ● ST = Stone



- The Eastman is clean, elegant, and easy—perfect for customers who want a traditional platform bed
- Upholstered in 3 fabric options
- Compatible with all Malouf™ adjustable bases and most competitors
- Pairs interchangeably with Malouf™ headboards
- 15-year warranty guarantees high-quality construction
- Additional specifications on following pages

SIZE	SKU	PRICE
Queen	STQQ_EASTPL	700.00
King	STKK_EASTPL	800.00
California King	STCK_EASTPL	800.00

DUNCAN UPHOLSTERED BASE



KEY FEATURES

- 1** **Slat Roll**
2.9-inch slat gap ensures compatibility with all industry mattress warranties
- 2** **Center Bar(s)**
create maximum support and comfort
- 3** **Corner Legs**
sleek wood finish
- 4** **Support Legs**
additional legs on drawer unit offer extra stability
- 5** **2 Drawers**
preassembled drawers attached to footboard for stylish underbed storage

COLORS AND SKU CODES

- OA = Oat
- CH = Charcoal
- ST = Stone

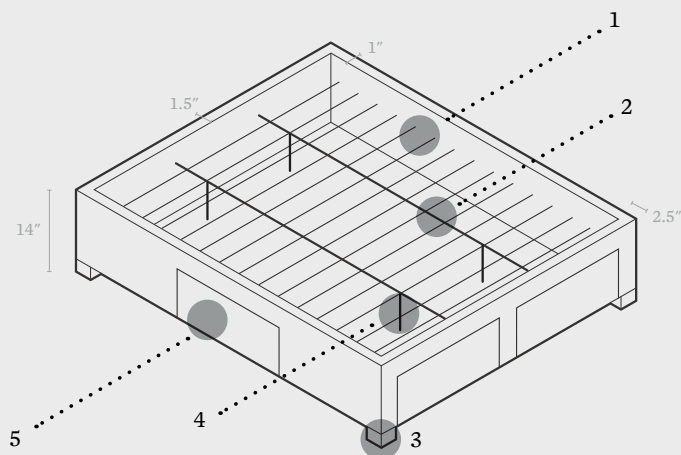


FURNITURE

- Two large drawers maximize space to create stylish underbed storage that maneuvers easily on glides
- Upholstered in 3 fabric options
- Compatible with zero-clearance adjustable bases
- Slats sit flush with top of base
- Pairs interchangeably with Malouf® headboards
- Drawers come preassembled and attached to footboard for easy assembly
- 15-year warranty guarantees high-quality construction
- Additional specifications on following pages

SIZE	SKU	PRICE
Queen	STDUNCUPLQQ_	1,100.00
King	STDUNCUPLKK_	1,300.00
California King	STDUNCUPLCK_	1,300.00

WATSON UPHOLSTERED BASE



KEY FEATURES

- 1** **Slat Roll**
2.9-inch slat gap ensures compatibility with all industry mattress warranties
- 2** **Center Bar(s)**
create maximum support and comfort
- 3** **Corner Legs**
sleek wood finish
- 4** **Additional Legs**
provided with center bar for additional stability
- 5** **4 Drawers With Wheels**
Quick assembly and easy storage with caster wheels for hassle-free access

COLORS AND SKU CODES

● OA = Oat ● CH = Charcoal ● ST = Stone



- Four large underbed drawers maneuver easily on wheels and provide subtle storage
- Upholstered in 3 fabric options
- Compatible with zero-clearance adjustable bases
- Pairs interchangeably with Malouf™ headboards
- 15-year warranty guarantees high-quality construction
- Additional specifications on following pages

SIZE	SKU	PRICE
Queen	STQQ_WATSPL	1,100.00
King	STKK_WATSPL	1,300.00
California King	STCK_WATSPL	1,300.00

SPECIFICATIONS

UPHOLSTERED BASES



FEATURE	EASTMAN	DUNCAN	WATSON
Corner Leg Height	4"	4"	2"
Floor to Top Rail Height	16"	14"	14"
Underbed Clearance	4"	4"	2"
Side Rail Thickness	1"	2"	1"
Head Rail Thickness	3"	2.5"	1.5"
Foot Rail Thickness	3"	2.5"	2.5"
Center Support Bars	KK, CK: 2 QQ: 1	KK, CK: 2 QQ: 1	KK, CK: 2 QQ: 1
Slat Roll Size	QQ, KK, CK: 16-piece	QQ, KK, CK: 16-piece	QQ, KK, CK: 16-piece
Weight Capacity	800 lbs	800 lbs	800 lbs
Drawers	0	2	4
Side Drawer Dimensions	-	-	25.4" x 19.7" x 4.7"
Foot Drawer Dimensions	-	Queen 23.5" x 18.5" x 5.5" King 31.5" x 18.5" x 5.5" Cal King 30.3" x 18.5" x 5.5"	Queen 25.4" x 19.7" x 4.7" King 33.5" x 19.7" x 4.7" Cal King 31.4" x 19.7" x 4.7"

PROTECTORS



PR1ME™ TERRY

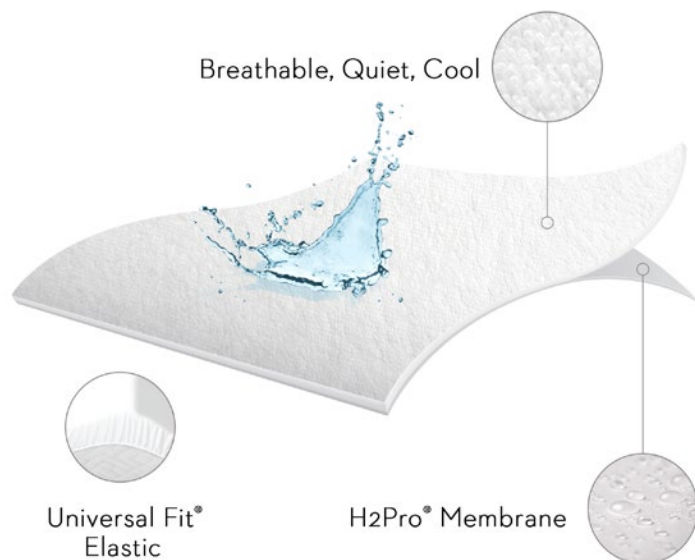


- Top of mattress protection
- Absorbent, hypoallergenic cotton terry sleeps comfortably and adds a cozy feel to the mattress
- Quiet and breathable laboratory-certified H2Pro™ membrane is liquid proof and dust mite proof
- Fitted sheet design features Universal Fit™ elastic that ensures a secure fit for mattress depths 6 to 22 inches
- 15-year non-prorated protector and mattress warranty when purchased on the same receipt

Mattress Protector

Case packs of 8

SIZE	SKU	PRICE
Crib	SL00CRMP	55.00
Cot	SL00CTMP	55.00
Twin	SL00TTMP	60.00
Twin XL	SL00TXMP	65.00
Full	SL00FFMP	70.00
Full XL	SL00FXMP	70.00
Queen	SL00QQMP	75.00
Olympic Queen	SL00OQMP	85.00
King	SL00KKMP	85.00
California King	SL00CKMP	90.00
Split Queen (2 Pieces)	SL00SQMP	95.00
Split King (2 Pieces)	SL00SKMP	95.00
Split California King (2 Pieces)	SL00SCMP	95.00



PROTECTORS

PR1ME™ SMOOTH

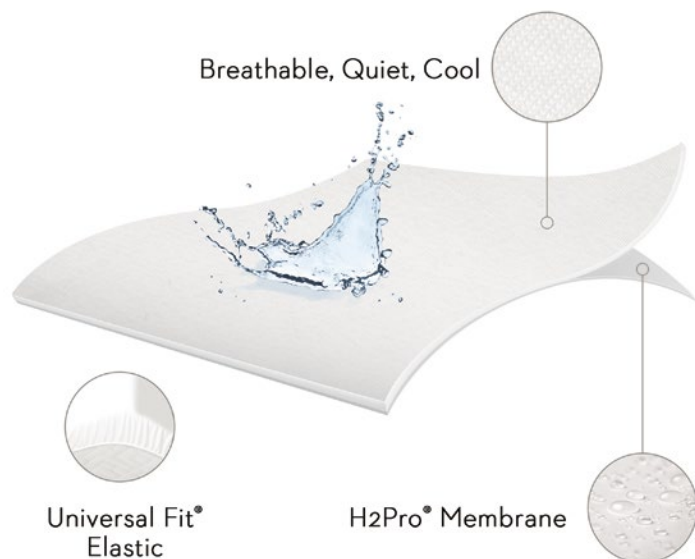


- Top of mattress protection
- Lightweight, hypoallergenic fabric sleeps comfortably without changing the feel of the mattress
- Quiet and breathable laboratory-certified H2Pro™ membrane is liquid proof and dust mite proof
- Fitted sheet design features Universal Fit™ elastic that ensures a secure fit for mattress depths 6 to 22 inches
- 15-year non-prorated protector and mattress warranty when purchased on the same receipt

Mattress Protector

Case packs of 8

SIZE	SKU	PRICE
Twin	SL0PTTMP	60.00
Twin XL	SL0PTXMP	65.00
Full	SL0PFFMP	70.00
Queen	SL0PQQMP	75.00
King	SL0PKKMP	85.00
California King	SL0PCKMP	90.00
Split Queen (2 Pieces)	SL0PSQMP	95.00
Split King (2 Pieces)	SL0PSKMP	95.00
Split California King (2 Pieces)	SL0PSCMP	95.00
Split Head Queen	SL0PYQMP	95.00
Split Head King	SL0PYKMP	105.00
Split Head California King	SL0PYCMP	105.00



Pillow Protector

Case packs of 8

SIZE	SKU	PRICE
Queen (Set of 2)	SL0PQQPP	65.00
King (Set of 2)	SL0PKKPP	70.00

PROTECTORS

FIVE SIDED™ SMOOTH

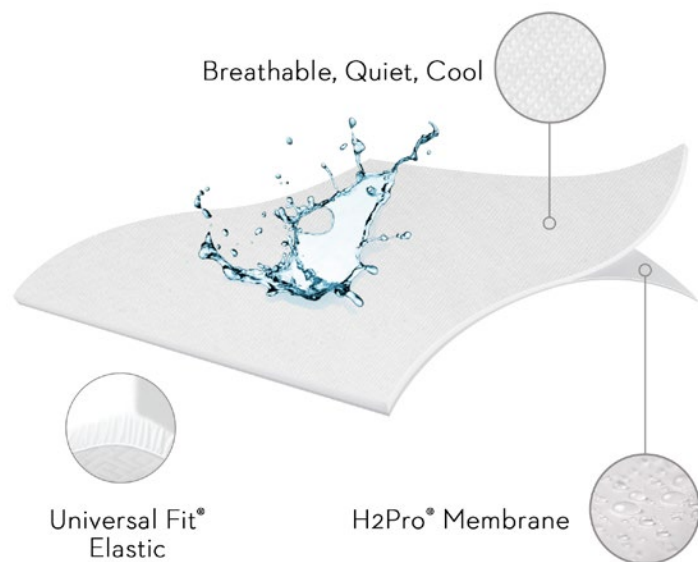


- Top and side mattress protection
- Plush, hypoallergenic fabric sleeps comfortably without changing the feel of the mattress
- Quiet and breathable laboratory-certified H2Pro™ membrane is liquid proof and dust mite proof
- Fitted sheet design features Universal Fit™ elastic that ensures a secure fit for mattress depths 6 to 22 inches
- 15-year non-prorated protector and mattress warranty when purchased on the same receipt

Mattress Protector

Case packs of 8

SIZE	SKU	PRICE
Twin	SL0PTT5P	85.00
Twin XL	SL0PTX5P	90.00
Full	SL0PFF5P	95.00
Queen	SL0PQQ5P	105.00
King	SL0PKK5P	120.00
California King	SL0PCK5P	130.00
Split Queen (2 Pieces)	SL0PSQ5P	130.00
Split King (2 Pieces)	SL0PSK5P	140.00
Split California King (2 Pieces)	SL0PSC5P	140.00



FIVE SIDED™ OMNIPHASE™

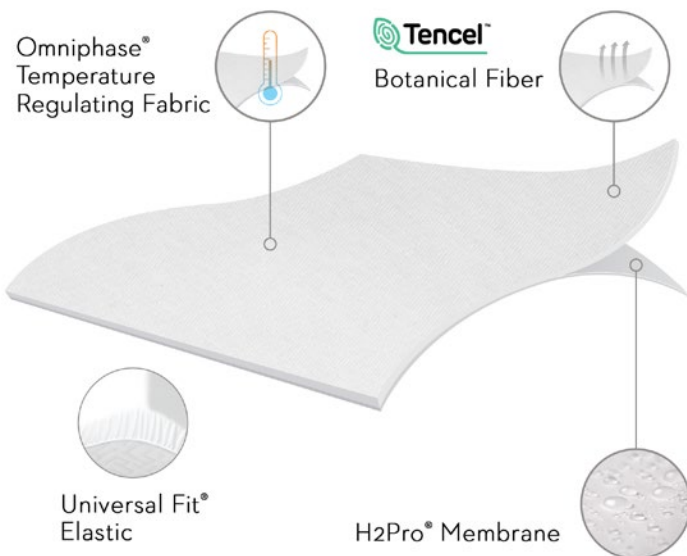


- Top and side mattress protection
- OmniPhase™ phase change material actively regulates temperature by absorbing and dissipating heat
- Known for superior moisture-management properties, Tencel™ Lyocell fiber aids in optimal sleeping temperatures
- Proprietary fabric combination provides all-season comfort
- Quiet and breathable laboratory-certified H2Pro™ membrane is liquid proof and dust mite proof
- Fitted sheet design features Universal Fit™ elastic that ensures a secure fit for mattress depths 6 to 22 inches
- 15-year non-prorated protector and mattress warranty when purchased on the same receipt

Mattress Protector

Case packs of 8

SIZE	SKU	PRICE
Twin	SL0TTT5P	105.00
Twin XL	SL0TTX5P	115.00
Full	SL0TFF5P	130.00
Queen	SL0TQQ5P	145.00
King	SL0TKK5P	155.00
California King	SL0TCK5P	160.00
Split Queen (2 Pieces)	SL0TSQ5P	160.00
Split King (2 Pieces)	SL0TSK5P	180.00
Split California King (2 Pieces)	SL0TSC5P	180.00
Split Head Queen	SL0TYQ5P	180.00
Split Head King	SL0TYK5P	200.00
Split Head California King	SL0TYC5P	200.00



PROTECTORS

FIVE SIDED™ ICETECH™

- Top and side mattress protection
- IceTech™ fabric provides continual heat dissipation, creating a cool sleeping climate
- Quiet and breathable laboratory-certified H2Pro™ membrane is liquid proof and dust mite proof
- Fitted sheet design features Universal Fit™ elastic that ensures a secure fit for mattress depths 6 to 22 inches
- 15-year non-prorated protector and mattress warranty when purchased on the same receipt

Mattress Protector

Case packs of 4

SIZE	SKU	PRICE
Twin	SLICTT5P	210.00
Twin XL	SLICTX5P	230.00
Full	SLICFF5P	265.00
Queen	SLICQQ5P	285.00
King	SLICKK5P	360.00
California King	SLICCK5P	360.00
Split Queen (2 Pieces)	SLICSQ5P	340.00
Split King (2 Pieces)	SLICKS5P	400.00
Split California King (2 Pieces)	SLICSC5P	400.00
Split Head Queen	SLICYQ5P	400.00
Split Head King	SLICYK5P	455.00
Split Head California King	SLICYC5P	455.00

Pillow Protector

Case packs of 12

SIZE	SKU	PRICE
Queen (Set of 2)	SLICQQP5	160.00
King (Set of 2)	SLICKKP5	200.00



ENCASE™ HD

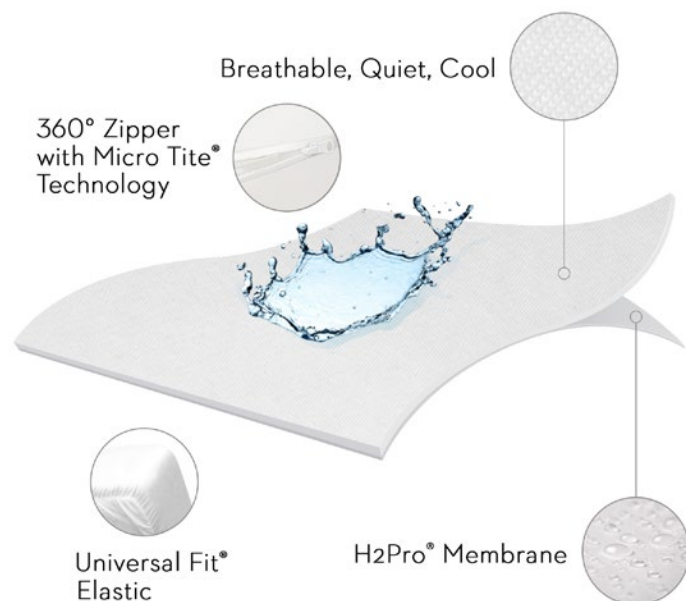


- Patented complete encasement mattress protection
- Laboratory-certified Micro Tite™ 360° zipper closure blocks bed bugs; easily removable for laundering
- Quiet and breathable laboratory-certified H2Pro™ membrane is liquid proof and dust mite proof
- Universal Fit™ inner elastic along bottom guarantees a smooth, secure fit for mattress depths 6 to 22 inches
- 15-year non-prorated protector and mattress warranty when purchased on the same receipt

Mattress Protector

Case packs of 8

SIZE	SKU	PRICE
Twin	SL0PTTEP	115.00
Twin XL	SL0PTXEP	120.00
Full	SL0PFFEP	140.00
Queen	SL0PQQEP	155.00
King	SL0PKKEP	165.00
California King	SL0PCKEP	165.00
Split Queen (2 Pieces)	SL0PSQEP	165.00
Split King (2 Pieces)	SL0PSKEP	190.00
Split California King (2 Pieces)	SL0PSCEP	190.00



QUILT TITE™

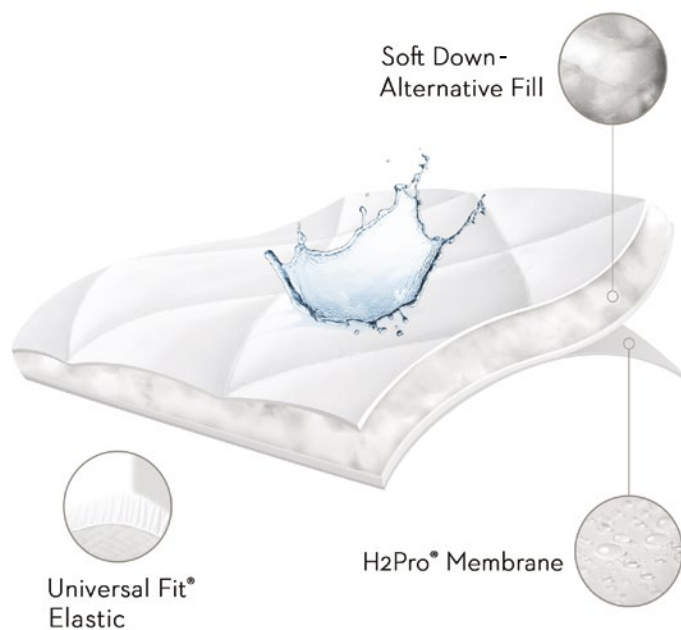


- Top and side mattress protection
- 400-thread-count pure cotton cover with down-alternative fill
- Added layer increases airflow, improving comfort
- Quiet and breathable laboratory-certified H2Pro™ membrane is liquid proof and dust mite proof
- Fitted sheet design features Universal Fit™ elastic that ensures a secure fit for mattress depths 6 to 22 inches
- 15-year non-prorated protector and mattress warranty when purchased on the same receipt

Mattress Protector

Case packs of 3 (2 for CK, KK)

SIZE	SKU	PRICE
Twin	SL04TTQT	120.00
Twin XL	SL04TXQT	125.00
Full	SL04FFQT	140.00
Queen	SL04QQQT	170.00
King	SL04KKQT	195.00
California King	SL04CKQT	195.00



PROTECTORS



Pr1me™ Terry

Pr1me™ Smooth

Five Sided™ Smooth

Five Sided™ OmniPhase™

Five Sided™ IceTech™

Quilt Tite™

Encase™ HD

Mattress Depth	6-22"	6-22"	6-22"	6-22"	6-22"	6-22"	6-22"
Warranty	15 Year	15 Year	15 Year	15 Year	15 Year	15 Year	15 Year
Laboratory-Certified H2Pro™ Liquid-Proof Membrane	●	●	●	●	●	●	●
Dust Mite Protection	●	●	●	●	●	●	●
Universal Fit™ Elastic	●	●	●	●	●	●	●
Laboratory-Certified Micro Tite 360 Zipper							●
Cooling				●	●		
Bed Bug Protection							●
Queen Price	\$75.00	\$75.00	\$105.00	\$145.00	\$285.00	\$170.00	\$155.00
Protection	Top of Mattress		Top and Sides of Mattress				Complete Encasement

PROTECTORS

BEDDING



SOFT-KNIT MICROFIBER



- Super soft, double-brushed microfiber
- Naturally stain and wrinkle resistant
- Universal Fit™ elastic and extra-deep pockets ensure a secure fit for mattress depths 6 to 14 inches
- Sheet set includes pillowcase(s)
- 3-year warranty guarantees high-quality construction

Sheet Set

Case packs of 4

SIZE	SKU	PRICE
Cot*	MA90CTWHMS	55.00
Twin	MA90TT_MS	70.00
Twin XL	MA90TX_MS	75.00
Full	MA90FF_MS	85.00
Full XL*	MA90FXWHMS	85.00
Short Queen*	MA90RQWHMS	75.00
Queen	MA90QQ_MS	90.00
King	MA90KK_MS	100.00
California King	MA90CK_MS	105.00
Split Queen*	MA90SQWHMS	105.00
Split King	MA90SK_MS	115.00
Split California King*	MA90SCWHMS	120.00

Pillowcase Set

Case packs of 8

SIZE	SKU	PRICE
Standard (Set of 2)*	MA90ST_PC	35.00
Queen (Set of 2)	MA90QQ_PC	40.00
King (Set of 2)	MA90KK_PC	50.00

Colors and SKU Codes

- WH = White
- DR = Driftwood
- AS = Ash
- PA = Pacific
- BH = Blush (*Twin, Full only*)

LINEN-WEAVE COTTON



- Casual, linen-like look made from 100 percent cotton
- Open percale weave is light and airy for extra breathable feel
- Cotton fibers are soft, strong, and naturally hypoallergenic
- Oversized dimensions provide relaxed, luxurious drape
- Universal Fit™ elastic and extra-deep pockets provide secure fit for mattress depths 6 to 14 inches
- New packaging allows for touchable fabric and uses 66% less plastic
- Sheet set includes pillowcase(s)
- 3-year warranty guarantees high-quality construction

Sheet Set

Case packs of 4

SIZE	SKU	PRICE
Twin	MA12TT_CS	155.00
Twin XL	MA12TX_CS	160.00
Full	MA12FF_CS	165.00
Queen	MA12QQ_CS	175.00
King	MA12KK_CS	190.00
California King	MA12CK_CS	190.00
Split Queen*	MA12SQWHCS	225.00
Split King	MA12SK_CS	235.00
Split California King*	MA12SCWHCS	235.00

Pillowcase Set

Case packs of 8

SIZE	SKU	PRICE
Queen (Set of 2)	MA12QQ_CC	55.00
King (Set of 2)	MA12KK_CC	60.00

Colors and SKU Codes

WH = White
 FG = Fog
 SA = Sand
 SG = Sage

SMOOTH BAMBOO RAYON



- Smooth, round fibers are hypoallergenic, and ideal for sensitive skin
- Fibers help wick away moisture from the skin to keep you cool in summer and warm in winter
- Oversized dimensions and will weave allow for a lovely drape
- Universal Fit™ ultra-thick elastic and extra-deep pockets ensure a secure fit for mattress depths 6 to 18 inches
- Sheet set includes pillowcase(s)
- 5-year warranty guarantees high-quality construction

Sheet Set

Case packs of 4

SIZE	SKU	PRICE
Twin*	MA25TTWHBS	195.00
Twin XL*	MA25TXWHBS	200.00
Full*	MA25FFWHBS	220.00
Queen	MA25QQ_BS	230.00
King	MA25KK_BS	245.00
California King	MA25CK_BS	250.00
Split Queen*	MA25SQWHBS	280.00
Split Head Queen*	MA25QWHBS	280.00
Split King	MA25SK_BS	300.00
Split California King*	MA25SCWHBS	300.00
Split Head King*	MA25KWHBS	300.00
Split Head California King*	MA25YCWHBS	300.00

Pillowcase Set

Case packs of 8

SIZE	SKU	PRICE
Queen (Set of 2)	MA25QQ_BC	70.00
King (Set of 2)	MA25KK_BC	70.00

Colors and SKU Codes

WH = White
 RA = Rain
 DR = Driftwood
 AS = Ash



BOTANICAL

SHEET SET WITH TENCEL™ LYOCELL FIBER

- 100 percent Tencel™ Lyocell fibers
- Made from eco-friendly, renewable botanical fiber in a closed-loop system
- Superior moisture management properties aid in cooler sleeping temperatures
- Unparalleled soft touch with a lustrous sateen weave
- Oversized dimensions allow for a lovely drape and fit
- Universal Fit™ ultra-thick elastic and extra-deep pockets ensure a secure fit for mattress depths 6 to 18 inches
- Sheet set includes pillowcase(s)
- 5-year warranty guarantees high-quality construction

Sheet Set

Case packs of 4

SIZE	SKU	PRICE
Twin*	MA03TTWHTS	195.00
Twin XL*	MA03TXWHTS	200.00
Full*	MA03FFWHTS	220.00
Queen	MA03QQ_TS	230.00
King	MA03KK_TS	245.00
California King	MA03CK_TS	250.00
Split Queen*	MA03SQWHTS	280.00
Split King	MA03SK_TS	300.00
Split California King*	MA03SCWHTS	300.00

Pillowcase Set

Case packs of 8

SIZE	SKU	PRICE
Queen (Set of 2)	MA03QQ_TC	65.00
King (Set of 2)	MA03KK_TC	75.00

Colors and SKU Codes

- WH = White
- OP = Opal
- DU = Dusk
- EC = Ecru

*Available in White Only

NATURAL SUPIMA® COTTON



- 100% American-grown, extra-long staple Supima® cotton
- Single-ply, 600-thread-count sheets feature a luxurious sateen weave
- Breathable and remarkably pill resistant; mercerized for softer, more vibrant color
- Branded Supima® fiber cannot be imitated or falsely advertised
- Universal Fit™ ultra-thick elastic and extra-deep pockets ensure a secure fit for mattress depths 6 to 18 inches
- Oversized dimensions allow for a lovely drape and fit
- Sheet set includes pillowcase(s)
- 5-year warranty guarantees high-quality construction

Sheet Set

Case packs of 4

SIZE	SKU	PRICE
Twin*	MAS6TTWHSS	315.00
Twin XL*	MAS6TXWHSS	335.00
Full*	MAS6FFWHSS	350.00
Queen	MAS6QQ_SS	385.00
King	MAS6KK_SS	475.00
California King	MAS6CK_SS	475.00
Split Queen*	MAS6SQWHSS	440.00
Split King	MAS6SK_SS	545.00
Split California King*	MAS6SCWHSS	545.00

Pillowcase Set

Case packs of 8

SIZE	SKU	PRICE
Queen (Set of 2)	MAS6QQ_PC	80.00
King (Set of 2)	MAS6KK_PC	85.00

Colors and SKU Codes

WH = White
 SM = Smoke
 FL = Flax
 CC = Charcoal



LUXE ITALIAN COTTON

- Extra-long staple pure Egyptian cotton
- Beautiful percale weave with hand-drawn hemstitching
- Hand-finished by artisans in northern Italy
- Oversized dimensions allow for a lovely drape and fit
- Universal Fit™ ultra-thick elastic and extra-deep pockets ensure a secure fit for mattress depths 6 to 22 inches
- Sheet set includes two pillowcases
- Designer packaging experience
- 10-year warranty guarantees high-quality construction

Artisan Sheet Set

Case packs of 5

SIZE	SKU	PRICE
Queen*	MA04QQWHIS	875.00
King*	MA04KKWHIS	965.00
California King*	MA04CKWHIS	965.00
Split King*	MA04SKWHIS	1,140.00
Split California King*	MA04SCWHIS	1,140.00

Artisan Pillowcase Set

Case packs of 5

SIZE	SKU	PRICE
Queen (Set of 2)*	MA04QQWHIC	300.00
King (Set of 2)*	MA04KKWHIC	315.00



BED IN A BAG



- Includes reversible down-alternative comforter, down-alternative pillow(s), and a brushed microfiber sheet set
- Super-soft, stain, and wrinkle resistant white sheet set includes flat sheet, fitted sheet(s), and pillowcase(s)
- Pillows feature luxurious down feel without odors, allergens, or sharp quills
- Featuring patented Duv8t™ Fastening System with 8 side and corner loops to secure your duvet cover without bunching
- 3-year warranty guarantees high-quality construction

Bed in a Bag Set

Case packs of 2

SIZE	SKU	PRICE
Twin	MA01TT_BB	205.00
Twin XL	MA01TX_BB	210.00
Full	MA01FF_BB	245.00
Queen	MA01QQ_BB	280.00
King	MA01KK_BB	335.00
California King*	MA01CKWHBB	335.00

Colors and SKU Codes

○ WHWH = White ● PAAS = Pacific/Ash





PILLOWS

GELLED MICROFIBER™



- Filled with gel-coated microfiber that doesn't shift or clump
- Luxurious down feel without odors, allergens, or sharp quills
- 250-thread-count pure cotton percale cover offers a crisp, clean, and breathable pillow surface
- 3-year warranty guarantees high-quality construction

Pillow

Case packs of 4

SIZE	SKU	PRICE
Queen	ZZQQ00GM	70.00
King	ZZKK00GM	85.00





CONVOLUTION™

- Removable, convoluted memory foam core encased in Gelled Microfiber™ fill
- Luxurious down feel without odors, allergens, or sharp quills
- 3 levels of customizable support to accommodate all sleeping positions
- 3-year warranty guarantees high-quality construction

Convolution™

- Dough™ memory foam core
- Crisp, breathable 300-thread-count pure cotton damask stripe cover features sophisticated piping

Case packs of 4

SIZE	SKU	PRICE
Queen	ZZQQX2CG	100.00
King	ZZKKX2CG	120.00

Gel Convolution™

- Gel Dough™ memory foam core
- Tencel™ Lyocell cover with superior moisture-management properties aids in optimal sleeping temperatures

Case packs of 4

SIZE	SKU	PRICE
Queen	ZZQQHPCOGF	140.00
King	ZZKKHPCOGF	165.00

TRIPLELAYER™ DOWN



- Luxuriously soft, supportive, and natural
- 90% down top and bottom layer
- 90% feather supportive inner core
- 100% natural unbleached, undyed cotton cover
- Breathable percale weave cover
- Ethically harvested down clusters and feathers
- Self-fabric packaging looks gorgeous on shelves
- 3-year warranty guarantees high-quality construction

Pillow

Case packs of 6

SIZE	SKU	PRICE
Queen	ZZQQ3L90DD	195.00
King	ZZKK3L90DD	210.00



ZONED DOUGH™ + BAMBOO CHARCOAL

- Infused with bamboo charcoal to help regulate humidity, temperature, and odors
- Zoned Technology™ design cradles the head while supporting the neck
- Ventilated for increased airflow and breathability
- Dough™ formula creates a softer, more supportive memory foam
- Tencel™ Lyocell removable cover with superior moisture-management properties aids in optimal sleeping temperatures
- 5-year warranty guarantees high-quality construction
- **Shoulder cutout** shape ideal for side sleepers



Mid Loft Pillow

Case packs of 4

SIZE	SKU	PRICE
Queen	ZZQQMPZB	140.00
King	ZZKKMPZB	160.00

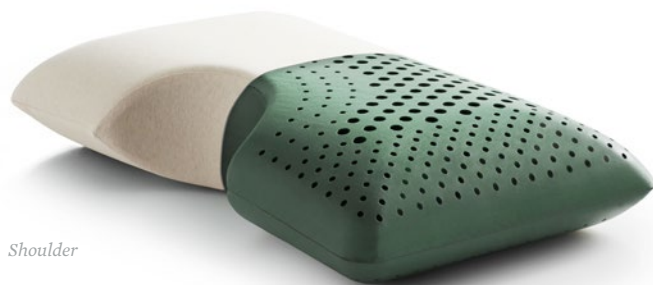
Shoulder Pillow

Case packs of 4

SIZE	SKU	PRICE
Queen	ZZQQSCMPZB	140.00
King	ZZKKSCMPZB	160.00



Shoulder



Shoulder

ZONED DOUGH™ + CBD OIL

- Pure CBD infusion can help soothe the senses and promote deeper and more restorative sleep; includes 4 mL spritzer of pure, organically grown CBD oil to be sprayed on the pillowcase for transdermal absorption
- Zoned Technology™ design cradles the head while supporting the neck
- Ventilated for increased airflow and breathability
- Dough™ formula creates a softer, more supportive memory foam
- 100% natural unbleached and undyed cotton cover
- 5-year warranty guarantees high-quality construction
- **Shoulder cutout** shape ideal for side sleepers

Pillow

Case packs of 4

SIZE	SKU	PRICE
Queen	ZZQQMPASZS	210.00
King	ZZKKMPASZS	230.00

Shoulder Pillow

Case packs of 4

SIZE	SKU	PRICE
Queen	ZZQQSCMPASZS	210.00
King	ZZKKSCMPASZS	230.00

CBD Spritzers

PRODUCT	SKU	PRICE
4 mL Spritzer <i>(included)</i>	ZZMMCBIDAS	-
60 mL Spritzer	ZZ60CBDAS	60.00



ZONED ACTIVE DOUGH™ + BAMBOO CHARCOAL



- Infused with bamboo charcoal to help regulate humidity, temperature, and odors
- ActiveDough™ foam combines the quick-response feel of latex and contouring relief of memory foam
- Zoned Technology™ design cradles the head while supporting the neck
- Ventilated for increased airflow and breathability
- Tencel™ Lyocell removable cover with superior moisture-management properties aids in optimal sleeping temperatures
- 5-year warranty guarantees high-quality construction

Pillow

Case packs of 4

SIZE	SKU	PRICE
Queen	ZZQKMPADZB	140.00
King	ZZKKMPADZB	160.00



ZONED ACTIVE DOUGH™ + CBD OIL



- Pure CBD infusion can help soothe the senses and promote deeper and more restorative sleep; includes 4 mL spritzer of pure, organically grown CBD oil to be sprayed on the pillowcase for transdermal absorption
- ActiveDough™ foam combines the quick-response feel of latex and contouring relief of memory foam
- Zoned Technology™ design cradles the head while supporting the neck
- Ventilated for increased airflow and breathability
- 100% natural unbleached and undyed cotton cover
- 5-year warranty guarantees high-quality construction

Pillow

Case packs of 4

SIZE	SKU	PRICE
Queen	ZZQQMPADASZS	210.00
King	ZZKKMPADASZS	230.00

CBD Spritzers

PRODUCT	SKU	PRICE
4 mL Spritzer (included)	ZZMMCBDAS	-
60 mL Spritzer*	ZZ60CBDAS	60.00





AROMATHERAPY ZONED DOUGH™

- Dough™ formula, infused with aromatherapy oil, creates softer, more supportive memory foam
- Tencel™ Lyocell mesh removable cover with superior moisture-management properties aids in optimal sleeping temperatures
- Included 3 mL aromatherapy spray helps boost and maintain scent
- Zoned Technology™ design cradles the head while supporting the neck
- Ventilated for increased airflow and breathability
- 5-year warranty guarantees high-quality construction
- **Peppermint** is known to promote clarity of mind and healthy respiratory function
- **Lavender** is known to promote calming, relaxing, and rejuvenating sleep
- **Shoulder cutout** shape is ideal for side sleepers

Pillow

Case packs of 4

SIZE	SKU	PRICE
Queen	ZZQQMPASZ_	160.00
King	ZZKKMPASZ_	175.00

Shoulder Pillow

Case packs of 4

SIZE	SKU	PRICE
Queen	ZZQQSCMPASZ_	160.00
King	ZZKKSCMPASZ_	175.00

Aromatherapy Spray

SIZE	SKU	PRICE
3 mL Spritzer (included)	● ZZMPPMAS ● ZZMMLVAS	-
60 mL Spritzer	● ZZ33LVAS	50.00



Infusions and SKU Codes

- P = Peppermint
- L = Lavender



AROMATHERAPY ZONED ACTIVEDOUGH™

- ActiveDough™ foam infused with aromatherapy oil; combines quick-response feel of latex and contouring relief of memory foam
- Tencel™ Lyocell mesh removable cover with superior moisture-management properties aids in optimal sleeping temperatures
- Included 3 mL aromatherapy spray helps boost and maintain scent
- Zoned Technology™ design cradles the head while supporting the neck
- Ventilated for increased airflow and breathability
- 5-year warranty guarantees high-quality construction
- **Peppermint** is known to promote clarity of mind and healthy respiratory function
- **Lavender** is known to promote calming, relaxing, and rejuvenating sleep



Pillow

Case packs of 4

SIZE	SKU	PRICE
Queen	ZZQQMPADASZ_	160.00
King	ZZKKMPADASZ_	175.00

Aromatherapy Spray

SIZE	SKU	PRICE
3 mL Spritzer (included)	ZZMMPMAS ZZMMLVAS	-
60 mL Spritzer	ZZ33LVAS	50.00



Infusions And SKU Codes

- P = Peppermint
- L = Lavender

*Limited Stock
www.maloufhome.com



SHREDDED GEL DOUGH™

- Shredded clusters improve airflow and moldability
- Gel Dough™ formula creates a cooler, softer memory foam
- Gel Dough™ sleeve allows for a consistent, cool feel
- Tencel™ Lyocell removable cover with superior moisture-management properties aids in optimal sleeping temperatures
- 5-year warranty guarantees high-quality construction

Pillow

Case packs of 4

SIZE	SKU	PRICE
Queen	ZZQQGFSG	115.00
King	ZZKKGFSG	140.00





ZONED GEL DOUGH™

- Gel Dough™ formula creates a cooler, softer memory foam
- Zoned Technology™ design cradles the head while supporting the neck
- Ventilated for increased airflow and breathability
- 5-year warranty guarantees high-quality construction
- Tencel™ Lyocell removable cover with superior moisture-management properties aids in optimal sleeping temperatures
- **Shoulder cutout** shape ideal for side sleepers

High Loft Pillow

Case packs of 4

SIZE	SKU	PRICE
Queen	ZZQQHPZG	140.00
King	ZZKKHPZG	160.00

Mid Loft Pillow

Case packs of 4

SIZE	SKU	PRICE
Queen	ZZQQMPZG	140.00
King	ZZKKMPZG	160.00

Low Loft Pillow

Case packs of 4

SIZE	SKU	PRICE
Queen	ZZQQLPZG	140.00
King	ZZKKLPZG	160.00

Shoulder Pillow

Case packs of 4

SIZE	SKU	PRICE
Queen	ZZQQSCMPZG	140.00
King	ZZKKSCMPZG	160.00



ZONED GEL ACTIVEDOUGH™

- Infused with cooling gel to regulate sleep temperature for optimal comfort
- ActiveDough™ foam combines the quick-response feel of latex and contouring relief of memory foam
- Ventilated for increased airflow and breathability
- Zoned Technology™ design cradles the head while supporting the neck
- Tencel™ Lyocell removable cover with superior moisture-management properties aids in optimal sleeping temperatures
- 5-year warranty guarantees high-quality construction
- **Shoulder cutout** shape ideal for side sleepers

Pillow

Case packs of 4

SIZE	SKU	PRICE
Queen	ZZQQMPADZG	140.00
King	ZZKKMPADZG	160.00

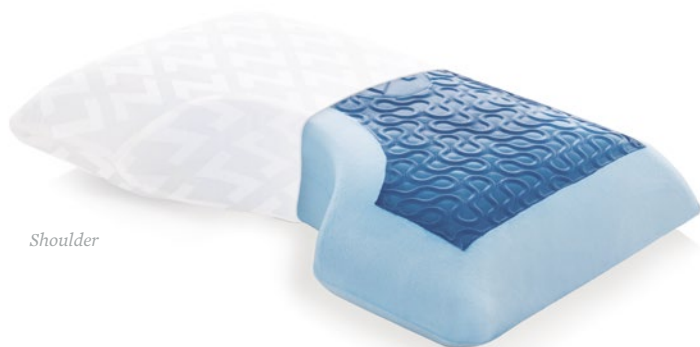
Shoulder Pillow

Case packs of 4

SIZE	SKU	PRICE
Queen	ZZQQSCMPADZG	140.00
King	ZZKKSCMPADZG	160.00



Shoulder



Shoulder

GEL DOUGH™ + Z™ GEL

- Unique gel combination great for maximum cooling
- Z™ Gel layer captures and dissipates heat
- Gel Dough™ formula creates a cooler, softer memory foam
- Tencel™ Lyocell removable cover with superior moisture-management properties aids in optimal sleeping temperatures
- 5-year warranty guarantees high-quality construction
- **Shoulder cutout** shape ideal for side sleepers

High Loft Pillow

Case packs of 4

SIZE	SKU	PRICE
Queen	ZZQQHPGL	175.00
King	ZZKKHPGL	195.00

Mid Loft Pillow

Case packs of 4

SIZE	SKU	PRICE
Queen	ZZQQMPGL	175.00
King	ZZKKMPGL	195.00

Shoulder Pillow

Case packs of 4

SIZE	SKU	PRICE
Queen	ZZQQSCMPGL	175.00
King	ZZKKSCMPGL	195.00

CARBONCOOL™ + OMNIPHASE™



- Infused with activated carbon and phase change material for constant temperature regulation that maintains the body's optimum sleep temperature
- Activated carbon infused in the foam creates pathways that move heat away from the head and neck
- Surface coated with OmniPhase™ phase change material, an advanced cooling technology that continuously absorbs and dissipates heat
- Soft, supportive memory foam relieves pressure points
- Ventilated for increased airflow and breathability
- Tencel™ Lyocell mesh removable cover with superior moisture-management properties aids in optimal sleeping temperatures
- 5-year warranty guarantees high-quality construction
- **Shoulder cutout** shape ideal for side sleepers; non-mesh Tencel™ Lyocell fabric cover



Pillow

Case packs of 4

SIZE	SKU	PRICE
Queen	ZZQQMPCCLT	195.00
King	ZZKKMPCCLT	210.00

Shoulder Pillow

Case packs of 4

SIZE	SKU	PRICE
Queen	ZZQQSCMPCCLT	210.00
King	ZZKKSCMPCCLT	230.00

ZONED TALALAY LATEX



- 100% natural Talalay latex with no synthetic additives
- Zoned Technology™ design cradles the head while supporting the neck
- Ventilated for increased airflow and breathability
- 100% natural cotton removable cover offers a crisp, clean, and breathable pillow surface
- 5-year warranty guarantees high-quality construction

High Loft Pillow

Case packs of 4

SIZE	SKU	PRICE
Queen Plush	ZZQQHPLX	175.00
Queen Firm	ZZQQHFLX	175.00
King Plush	ZZKKHPLX	190.00
King Firm	ZZKKHFLX	190.00

Low Loft Pillow

Case packs of 4

SIZE	SKU	PRICE
Queen Plush	ZZQLPLX	175.00
Queen Firm	ZZQLFLX	175.00
King Plush	ZZKLPLX	190.00
King Firm	ZZKLFLX	190.00



LOUNGE™



- Shredded memory foam blend fill
- Supports arms and upper body to reduce back and shoulder strain
- Enhanced comfort while reading, browsing, or watching TV in bed
- Super soft and cozy rayon from bamboo cover showcases an elegant jacquard design
- 3-year warranty guarantees high-quality construction
- Pillow measures 35 x 22 x 17 inches

Pillow

Case packs of 4

SIZE	SKU	PRICE
Reading Pillow	ZZ00SFRP	115.00



WEDGE

- Angled design helps relieve snoring, heartburn, acid reflux, and sinus pressure
- Super soft and cozy rayon-from-bamboo cover showcases an elegant jacquard design
- Firm, supportive foam maintains shape
- 3-year warranty guarantees high-quality construction

Wedge

- Supportive base foam maintains shape
- Standard size pillow width; pillow measures 24 x 24 x 7 inches

Case packs of 4

SIZE	SKU	PRICE
Wedge Pillow	ZZ2407FW	100.00

Gel Dough™ Wedge

- Top layer of Gel Dough™ memory foam is soft and cool
- Supportive base foam maintains shape
- Higher loft for increased effectiveness
- Queen pillow width; pillow measures 29 x 29 x 10 inches

Case packs of 4

SIZE	SKU	PRICE
Gel Dough™ Wedge Pillow	ZZ2910GW	160.00



BODY PILLOWS



- Provides back and belly support to alleviate maternity discomfort
- Versatile design provides customized support
- Luxurious down-alternative fill feels like down without odors, allergens, or sharp quills
- Tencel™ Lyocell removable cover with superior moisture-management properties aids in optimal sleeping temperatures
- 3-year warranty guarantees high-quality construction

Horseshoe

- Measures 28 x 30 x 7 inches

Case packs of 4

SIZE	SKU	PRICE
Horseshoe Pillow	ZZPUHFGM	125.00



Horseshoe

Wrap-Around

- Elevates and aligns the hips for a neutral sleeping position
- Measures 52 x 28 x 7 inches

Case packs of 4

SIZE	SKU	PRICE
Wrap-Around Pillow	ZZPJHFGM	160.00



Wrap-Around



L-SHAPE

- Ergonomic shape provides support for the head, neck, and shoulders
- Offers comfort for multiple sleep positions
- Gel Dough™ formula creates a cooler, softer memory foam
- Tencel™ Lyocell removable cover with superior moisture-management properties aids in optimal sleeping temperatures
- 5-year warranty guarantees high-quality construction
- Pillow measures 27 x 27 x 5 inches

Pillow

Case packs of 4

SIZE	SKU	PRICE
L-Shape Pillow	ZZ00LLGF	140.00

TRAVEL PILLOWS

Travel Pillow

- All the benefits of your favorite Malouf™ pillow in a convenient travel size
- Available in a variety of materials and covers
- Smaller size great for easy packing

SIZE	SKU	PRICE
A. <i>Dough</i> ™	ZZTRHPDF	45.00
B. Shredded <i>Gel Dough</i> ™	ZZTRGFSG	50.00
C. <i>Zoned Dough</i> ™ + Lavender	ZZTRMPASZL	60.00
D. <i>Gel Dough</i> ™ + <i>Z</i> ™ Gel	ZZTRHPGL	60.00
E. <i>CarbonCool</i> ™ + <i>OmniPhase</i> ™	ZZTRMPCCLT	90.00



A



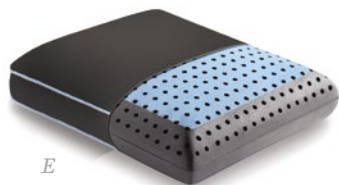
B



C



D



E



G



H



I

Travel Neck Pillow

- All the benefits of your favorite Malouf™ pillow in a convenient travel size
- Available in a variety of materials and covers
- Wraps around the neck for total support

SIZE	SKU	PRICE
G. Shredded <i>Gel Dough</i> ™	ZZTNGFSG	40.00
H <i>Zoned Dough</i> ™ + Lavender	ZZTNMPASZL	45.00
I. <i>Gel Dough</i> ™ + <i>Z</i> ™ Gel	ZZTNHPGL	50.00

REPLACEMENT PILLOW COVERS

Tencel™ Lyocell Covers

SIZE	SKU	PRICE
Queen Mid Loft	ZZQQMPTJRC	25.00
Queen Shoulder	ZZQQSCMPTJRC	25.00
King Mid Loft	ZZKKMPTJRC	30.00
King Shoulder	ZZKKSCMPTJRC	30.00



BED FRAMES



ADJUSTABLE BED FRAME

- Patented Tri-Support™ system reinforces steel joints for optimal support
- Longer rails accommodate extra-long beds and offer increased stability; up to 9 support legs
- Extra-wide double rail center support
- Universal size fits Twin, Twin XL, Full, Full XL, Queen, King, and California King
- Pre-installed headboard brackets are compatible with most headboards
- Choose the 2.5-inch in-line rug roller option with locking wheels, great for carpeted floors; or choose the glide option designed for hard floors
- 100% solid steel construction
- 3-year warranty guarantees high-quality construction



Glide Only Frame

Optimal shipping economies = by the pallet

SIZE	SKU	PRICE
Full/Twin	MA4633GL	115.00
Queen/Full/Twin	MA5033GL	150.00
¹ Universal	MA6633GL	185.00

Rug Roller Frame

Optimal shipping economies = by the pallet

SIZE	SKU	PRICE
Full/Twin	MA4633BF	115.00
Queen/Full/Twin	MA5033BF	150.00
¹ Universal	MA6633BF	185.00

¹Shown to the left

BED FRAMES



HIGHRISE™ LT

- Eliminates the need for a box spring
- 13 inches of clearance creates up to 45 cubic feet of storage space
- Now with easier assembly—new tightening system requires no additional tools or hardware
- Folded and boxed for easy storage and transport
- 2,000-pound weight capacity
- 5-year warranty guarantees high-quality construction

Bed Frame

Optimal shipping economies = by the pallet

SIZE	SKU	PRICE
Twin	ST22TTFP	245.00
Twin XL	ST22TXFP	265.00
Full	ST22FFFP	315.00
Queen	ST22QQFP	335.00
King	ST22KKFP	385.00
California King	ST22CKFP	405.00

Headboard Brackets

Optimal shipping economies = by the pallet

SIZE	SKU	PRICE
Headboard Brackets for 14" Highrise Frames	ST14HBHR	55.00

HIGHRISE™ HD | 18"



- Eliminates the need for a box spring
- 17 inches of under-bed clearance for additional storage space
- Folded and boxed for easy storage and transport
- No assembly required
- New locking mechanism features durable construction and easier assembly
- 2,500-pound weight capacity
- Lifetime warranty guarantees high-quality construction

18" Bed Frame

Optimal shipping economies = by the pallet

SIZE	SKU	PRICE
Twin	ST22TT18HD	295.00
Twin XL	ST22TX18HD	315.00
Full	ST22FF18HD	350.00
Queen	ST22QQ18HD	385.00
King	ST22KK18HD	440.00
California King	ST22CK18HD	440.00

Headboard Brackets

Optimal shipping economies = by the pallet

SIZE	SKU	PRICE
Headboard Brackets for 18" Highrise Frames	ST18HBHR	60.00



TOPPERS





3" DOWN ALTERNATIVE

- Down-alternative filling adds a soft layer to any mattress without odors, allergens, or sharp quills associated with down and feathers
- 250-thread-count pure cotton percale cover offers a crisp, clean, and breathable surface
- Baffle-box construction keeps fill from clumping or shifting
- Thick elastic anchor bands secure topper at mattress corners
- 3-year warranty guarantees high-quality construction

Mattress Topper

SIZE	SKU	PRICE
Twin	IS30TTDAFB	175.00
Twin XL	IS30TXDAFB	195.00
Full	IS30FFDAFB	210.00
Queen	IS30QQDAFB	245.00
King	IS30KKDAFB	315.00
California King	IS30CKDAFB	315.00





2.5" GEL MEMORY FOAM

- 2.5-inch thick gel-infused memory foam offers superior cooling
- Removable rayon from bamboo cover
- Ventilated to increase airflow and regulate sleeping temperature
- 3-year warranty guarantees high-quality construction
- Soft, supportive consistency quickly conforms to the body

Mattress Topper

SIZE	SKU	PRICE
Twin	IS25TT45GT	230.00
Twin XL	IS25TX45GT	245.00
Full	IS25FF45GT	300.00
Queen	IS25QQ45GT	350.00
King	IS25KK45GT	455.00
California King	IS25CK45GT	455.00



ORDER TODAY

1.800.517.7179
wrc.maloufhome.com

VISIT OUR SHOWROOMS

NEW YORK
230 Fifth Avenue, Suite 1312

LAS VEGAS
World Market Center, Suite B1350

HIGH POINT
Market on Green, Suite 100-101

TUPELO
Building 6, Space 6024